



# Winch Mount Plate Kit

Installation Manual: for Jeep Wranglers  
& Gladiators #92122-2903



## NOTICE

SHACKLES ARE NOT INCLUDED. SHACKLES ARE SOLD SEPARATELY AND MAY BE FITTED AS DEPICTED.



**⚠ WARNING ⚠**

TO REDUCE RISK OF SERIOUS INJURY OR PROPERTY DAMAGE: READ ALL SAFETY MESSAGES AND UNDERSTAND ALL INSTRUCTIONS AND PROCEDURE NOTICES BEFORE ATTEMPTING TO INSTALL OR USE THIS PRODUCT.

**⚠ CAUTION ⚠**

RISK OF EYE INJURY! SAFETY GLASSES MUST BE WORN AT ALL TIMES WHILE INSTALLING OR MAINTAINING THIS PRODUCT. TORQUE AND RECHECK FASTENERS AFTER 250 MILES AND FREQUENTLY THEREAFTER. DO NOT USE IF DAMAGED.

**NOTICE**

AN AUXILLARY SKID PLATE ADDS EXTRA PROTECTION ON THE TRAIL, BUT IT CAN NOT GUARANTEE AGAINST ALL POSSIBLE DAMAGE FROM LARGE OBJECTS YOU MAY ENCOUNTER. ALWAYS DRIVE WITH RESPECT FOR OBJECTS AND TERRAIN THAT COULD DAMAGE SENSITIVE PARTS OF THE VEHICLE.

**A FEW WORDS ABOUT PRODUCT SAFETY:**

Your Carnivore Winch Mount Plate is intended to enhance the utility and enjoyment of your off road capable vehicle. Follow safety information and installation recommendations. Throughout these instructions is important safety information that is generally preceded by one of three signal words indicating the relative risk of injury, property damage or adverse consequence.

The signal words mean:

**⚠ WARNING ⚠**

A HAZARDOUS SITUATION WHICH, IF NOT AVOIDED, COULD RESULT IN DEATH OR SERIOUS INJURY. YOU CAN BE KILLED OR SERIOUSLY HURT IF YOU DON'T FOLLOW INSTRUCTIONS.

**⚠ CAUTION ⚠**

A HAZARDOUS SITUATION WHICH, IF NOT AVOIDED, COULD RESULT IN A MINOR OR MODERATE INJURY. YOU CAN BE MODERATELY HURT AND ALSO MAY SUFFER PROPERTY DAMAGE IF YOU DON'T FOLLOW INSTRUCTIONS.

**NOTICE**

CAREFUL ATTENTION IS REQUIRED TO THIS INSTRUCTION OR OPERATION BUT DOES GENERALLY NOT RELATE TO PERSONAL INJURY. DAMAGE TO YOUR CARNIVORE™ PRODUCT OR OTHER PROPERTY MAY RESULT IF YOU DON'T FOLLOW INSTRUCTIONS.

**BEFORE YOU BEGIN INSTALLATION:**

Congratulations on your purchase of Carnivore Winch Mount Plate for your Jeep® Wrangler. This custom Winch Plate Kit has been designed for protection, long life, and great looks. When unpacking, check to make sure all parts are included and not damaged due to shipping. If any part is missing or broken, please call Customer Service at 800-745-6037 as soon as possible. Thank you again for your purchase and let's start the installation process.

**⚠ CAUTION ⚠**

READ ALL SAFETY MESSAGES AND ALWAYS WEAR SAFETY GLASSES WHEN WORKING WITH TOOLS.

**⚠ CAUTION ⚠**

SHARP EDGES ARE POSSIBLE! GLOVES MUST BE WORN AT ALL TIMES WHILE INSTALLING OR MAINTAINING THIS PRODUCT. DO NOT USE IF DAMAGED.

**⚠ WARNING ⚠**

ALWAYS FOLLOW ALL SAFETY WARNINGS, CAUTIONS AND NOTICES IN THE INSTALLATION INSTRUCTIONS AND DOCUMENTATION THAT CAME WITH YOUR RECOVERY WINCH. THIS DOCUMENT ONLY REFERS TO THE WINCH MOUNTING PLATE INSTALLATION.

**NOTICE**

WE ALSO RECOMMEND THAT YOU HAVE A HELPER NEARBY AS SOME OF THE STEPS OUTLINED BELOW WILL BE MUCH EASIER WITH THE HELP OF ANOTHER SET OF HANDS.

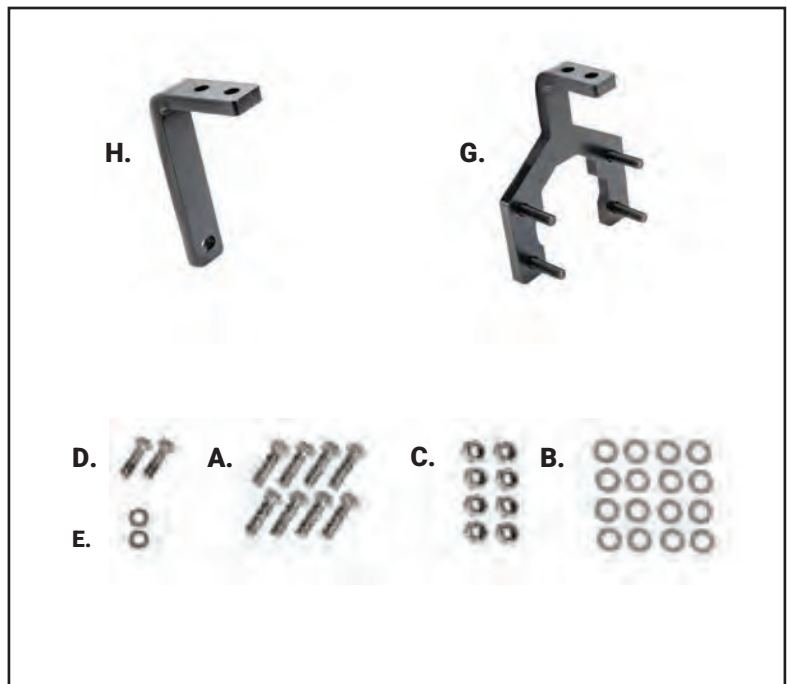


**REQUIRED TOOLS:**

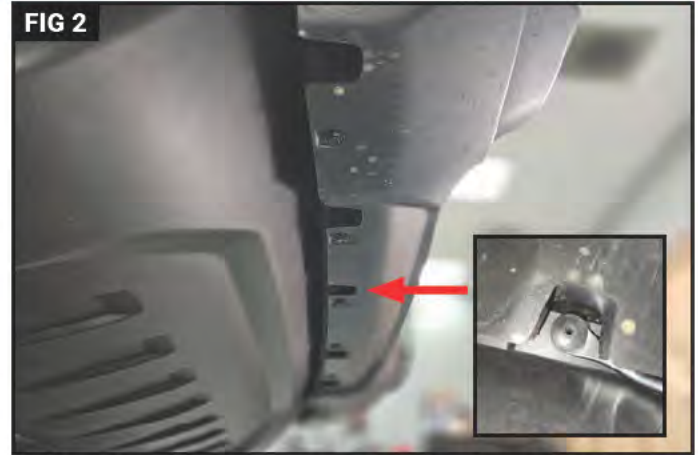
- Safety Glasses
- Flathead Screwdriver
- 10MM Socket
- 18MM Socket
- 18MM Open End Wrench
- 19MM Socket
- 16MM Socket
- 13MM Socket
- Socket Extension
- Torque Wrench
- Ratchet
- Pry Tool

**KIT CONTENT LIST:**

- A. M12 Mounting Bolt (x8)
- B. M12 Flat Washer (x16)
- C. M12 Nylock Nut (x8)
- D. M10 Mounting Bolt (2)
- E. M10 Flat Washer (x2)
- F. Winch Mounting Plate (x1)
- G. Front Mounting Bracket (x2)
- H. Rear Mounting Bracket (x2)



## STEP 1 - Front Plastic Bumper Trim Removal



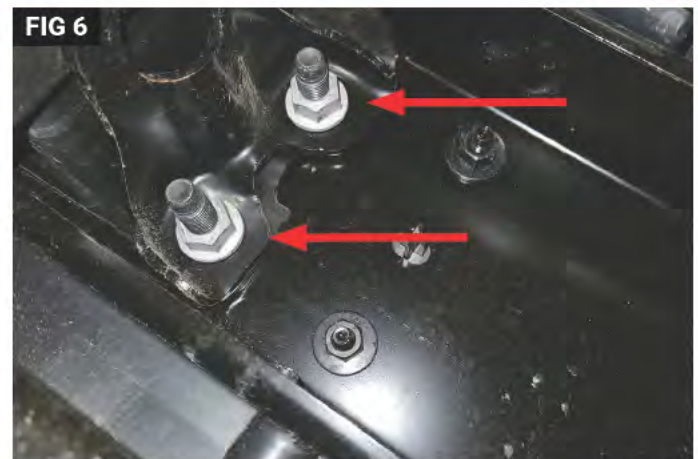
Remove the front plastic air dam. Air dam is held in place by eight plastic fasteners along the lower front of the factory plastic bumper. Plastic fasteners can be removed by using a flat head screw driver or a plastic fastener pry tool. Slide tool under plastic lip and pull down. Plastic fastener can then be removed. Do not discard. (Fig 1 & 2)

## STEP 2 - Bumper Removal



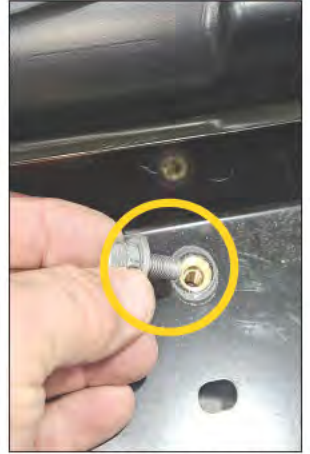
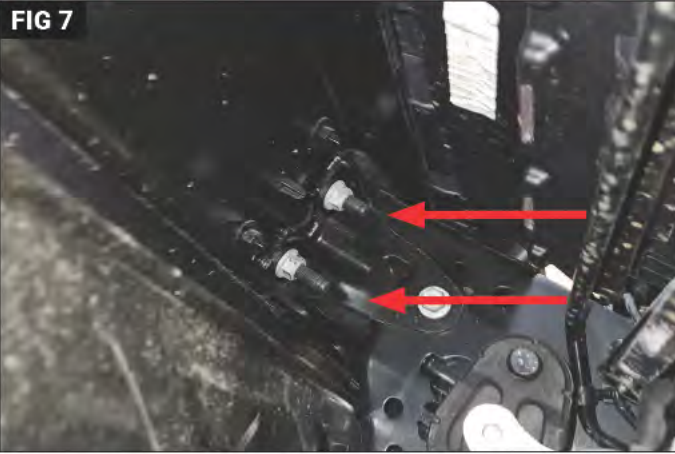
Remove the two M10 mounting bolts located along the front of plastic air dam. Do not discard. The air dam and plastic fasteners will be reinstalled at the end of the installation. (Fig 3) Remove upper plastic bumper valance cover plastic fasteners. Using a flathead screwdriver or a plastic fastener pry tool, lift up the center plastic pin. Lift the full plastic fastener out. Repeat for the other side. Unplug Factory foglights if equipped. Connector is located on passenger side frame towards bumper. (Fig 4)

## STEP 3



If equipped, remove the (7) upper valance plastic fasteners using a flathead screw driver or plastic pry tool. Pull plastic retainer pins out and remove fastener. Lift upper plastic bumper valance up and discard. Valance will not be reused. (Fig 5) Using a 18mm socket and ratchet remove the (8) mounting nuts holding the front bumper to frame. There are (4) outer nuts and (4) inner nuts. Do not discard. Nuts will be reused. The brackets may be discarded. (Fig 6)

## STEP 4



Using a 16mm socket remove the bolts securing the inner bumper to frame bracket. Inner bracket will not be required for winch plate installation. DO NOT remove outer bumper to frame brackets. (Fig 7) Remove the outer rear trim covers. Covers are secured using plastic press pins or Phillips head screws. Use a flat head screwdriver to remove plastic press pin as shown. Remove the (8) 13MM bolts holding the inner steel support to plastic outer bumper. Bolts will be reused. Place bumper face down onto bracket to avoid scratches to the bumpers plastic surface. (Fig 8)

## STEP 5 - Front Tow Hook Removal



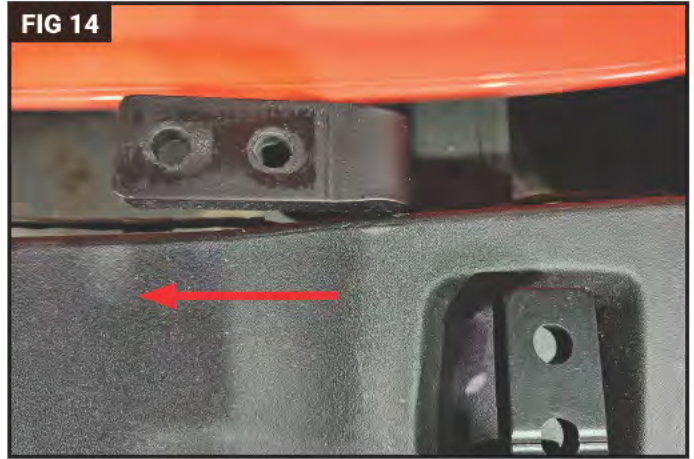
Unclip any fog light wire harness connections and remove inner steel bumper support to gain access to factory tow hooks. (Fig 9) Remove factory hooks and replace with supplied front mounting brackets. Tops of mounting bracket must face backwards towards the grille when bumper is reinstalled. (Fig 10)

## STEP 6 - Bumper installation



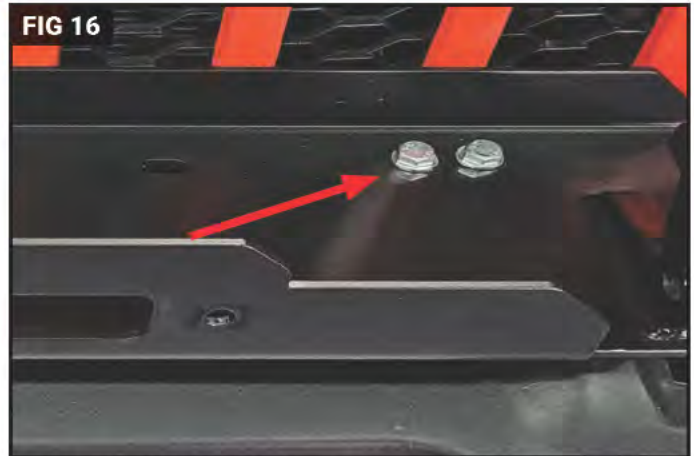
Reinstall inner steel bumper support using 13mm bolts removed in Step 5. (Fig 11) Reconnect fog light wire harness if removed. Reinstall outer rear trim covers removed in step 4. Carefully place bumper back onto frame. Using a 18mm socket reinstall the 8 nuts removed in step 5. Torque nuts to 65lbs. Reconnect factory foglights if equipped. (Fig 12)

## STEP 7 - Rear Mounting Installation



Using 16mm socket install rear mounting brackets to inside frame rail using supplied M10 bolt, lock washer and flat washer. Top of bracket must be turned inwards as shown. (Fig 13 & 14) Repeat for other side. Do Not Tighten. Adjustment will be required during installation of winch plate.

## STEP 8 - Winch Plate Installation



Place Carnivore winch plate on top of front mounting brackets and loosely install the front M12 mounting bolt, lock washer, flat washers and M12 nylock nut using 19mm open end wrench and a 18mm socket. Do not tighten at this time. (Fig 15) Place rear mounting brackets up to winch plate. Align mounting holes and place an M12 bolt, lock washer, M12 flat washer into each hole. Repeat for all four mounting holes. (Fig 16) **NOTE:** On rare occasions minor trimming of the plastic bumper may be required to allow proper alignment.

## STEP 9



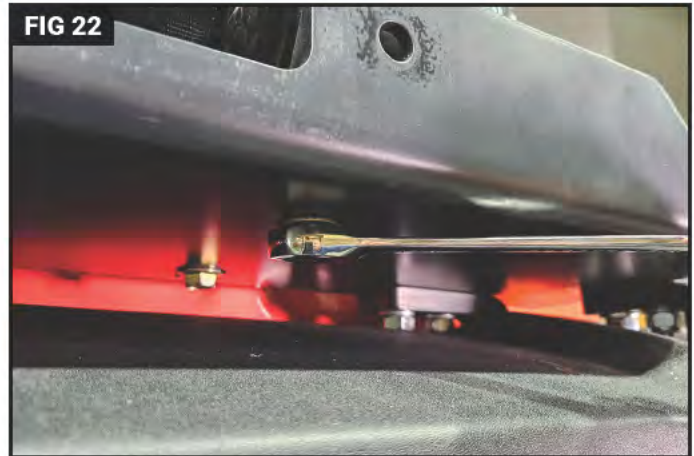
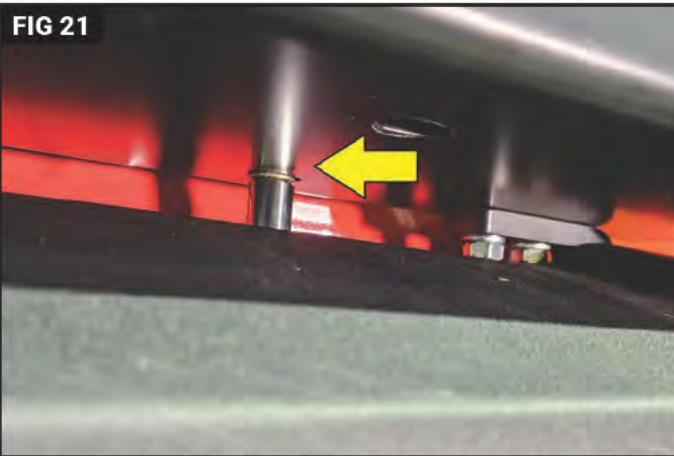
Secure the rear mounting brackets with M12 nylock nuts and M12 flat washers. Use of socket extension with 19mm socket is recommended to rear mounting bracket 12mm nylock nuts. Repeat for all four bolts. Do not tighten at this time. Tighten the M10 bolts securing the rear mounting brackets to the frame rails. Tighten to 65lbs. (Fig 17) Tighten front mounting bracket bolts to 65lbs. (Fig 18)

## STEP 10



Tighten the rear winch plate to rear mounting brackets bolts to 65lbs. (Fig 19) Mount fairlead to Carnivore winch plate. (Fig 20)

## STEP 11



Lower winch onto Carnivore winch plate. Fasten winch to Carnivore winch plate following the winch manufactures instructions. (Fig 21) Rear mounting bolts are accesable from the back side of the bumper. Front mounting bolts can be reached from the front. (Fig 22) **NOTE:** Front plastic air dam can be reinstalled if desired. Installation is the reversal of step 1. Installation is now complete.

# Carnivore Exclusive Three Year Limited Warranty

Your Carnivore branded accessories are covered by the following Limited Warranty provided exclusively by Carnivore, 1028 Saunders Lane, West Chester PA 19380.

This **Limited Warranty** is the only warranty made in connection with your purchase. Carnivore neither assumes nor authorizes any vendor, retailer or other person or entity to assume for it any other obligation or liability in connection with this product or Limited Warranty. This Limited Warranty does not apply and is not cumulative to any accessory or part distributed by Carnivore for which the Manufacturer provides a separate written warranty.

## **What is Covered:**

Subject to the terms, exclusions and limitations herein and with respect only to Carnivore branded accessories first sold in the United States, Carnivore warrants to the initial retail purchaser only that your Carnivore accessory shall be free of defects in material and workmanship: for a period of three (3) years from date of retail purchase.

This **Limited Warranty** is not assignable and shall terminate upon sale of the vehicle upon which the Carnivore accessory is installed or other transfer to third persons.

All other warranties are hereby disclaimed, except to the extent prohibited by applicable law in which case any implied warranty of merchantability or fitness for a particular purpose on this product is limited to three (3) years from date of initial retail sale. Carnivore reserves the rights to: **(a.) require invoice or other proof your accessory is within the terms of this Limited Warranty as a condition of warranty service and, (b.) make future revisions to this product and Limited Warranty without prior notice or obligation to upgrade your product.**

## **What is Not Covered:**

Your Carnivore Limited Warranty does not cover products or parts Carnivore determines to have been damaged by or subjected to: **(a.) installation damage, alteration, modification, combination with other parts, failure to maintain or improper repair or service, (b.) normal wear & tear, cosmetic damage or damage from moisture or water immersion, (c.) Acts of God, accidents, misuse, negligence, inadequate mounting or impact with vehicle(s), obstacles or other aspects of the environment, (d.) theft, vandalism or other intentional damage.**

## **Remedy Limited to Repair/Replacement:**

The exclusive remedy provided hereunder shall, upon Carnivore inspection and at our option, be either repair or replacement of product or parts (new or refurbished) covered under this Limited Warranty. Customers requesting warranty consideration should first contact Carnivore to obtain a RGA number (610-701-3336). All labor, removal, shipping and installation costs are customer's responsibility.

## **Other Limitations - Exclusion of Damages - Your Rights Under State Law:**

In consideration of the purchase price paid, neither Carnivore nor any independent Carnivore distributor/licensee are responsible for any time loss, rental costs, or for any incidental, consequential, punitive or other damages you may have or incur in connection with any part or product purchased. Your exclusive remedy hereunder for covered parts is repair/replacement as described above.

This **Limited Warranty** gives you specific rights. You may also have other rights that vary from state to state. For example, some states do not allow limitations of how long an implied warranty lasts and /or do not allow the exclusion or limitation of incidental or consequential damages, so the limitations and exclusions herein may not apply to you.

Carnivore. 2024. All Rights Reserved.  
A4 Version12/2/2024

